



“ When immigrant-origin students succeed, colleges, universities, local communities, and the economy succeed alongside them.”

— Miriam Feldblum,
Executive Director, Presidents' Alliance

740 15th Street, NW Suite 900, Washington, D.C. 20005
info@presidentsalliance.org
presidentsalliance.org
higheredimmigrationportal.org

Design by trueindigo.co

Photos: Istock by getty images

Icons and illustrations: The Noun Project, Freepick

TABLE OF CONTENTS



MESSAGE FROM PRESIDENTS' ALLIANCE CO-CHAIRS AND EXECUTIVE DIRECTOR	4
Steering Committee Members	5
IMPACT AT A GLANCE	6
Inform	7
Organize	8
Mobilize	9
SPOTLIGHT: HIGHER ED IMMIGRATION PORTAL	10
Key Data	10
Features	10
Theory of Change	11
SPOTLIGHT INITIATIVE: RESPONSE CAMPAIGN	12
Background	12
What is university sponsorship?	14
The RESPONSE Campaign	14
Support from U.S. Department of State	14
SUPPORTERS AND FUNDERS	15
MEMBERSHIP BY THE NUMBERS	16
Member Institutions	18
Affiliate Partners	23
ADVISORY GROUPS	24
Federal Policy Advisory Table	24
Legal Advisory Council	24
Student Strategy Table	24
STAFF	24
Presidents' Alliance Staff	24
Presidents' Alliance Student Fellows	24
JOIN OUR MOVEMENT	26

MESSAGE FROM PRESIDENTS' ALLIANCE CO-CHAIRS AND EXECUTIVE DIRECTOR

Dear Colleagues and Friends,

Greetings! It has been another active and impactful year at the Presidents' Alliance. Our Alliance continues to be a critical resource that activates the collective voice of over 500 college and university presidents and chancellors on the immigration issues impacting our students, campuses, and communities. Over the past year, we have developed closer working relationships with key offices and staff members in the White House and in the departments of Homeland Security, State and Education, which now look to the Alliance for policy expertise, advocacy and messaging support. We have also established closer ties with business and immigrant and refugee serving organizations and charitable funders who share our goal of enacting sensible, welcoming immigration policies, including the ability of Dreamers and others already present in our country to gain lawful status.

We have much to celebrate, even as we look forward to the challenging work ahead. Listed below are just some of the ways we have made noteworthy progress this past year in bringing together a range of partners with higher education leaders to advocate for our collective goals.

- Staunchly defended DACA and undocumented students *in the courts*, and through *engagement in the rule-making process* with the Biden Administration.
- Advocated for a *pathway to citizenship* for Dreamers and other undocumented youth and community members with Congress.
- Successfully engaged the Administration to *implement many of our recommendations* to welcome and support undocumented, international, refugee and other immigrant students and scholars on our campuses.
- Affirmed the *value of international students* and worked with partners and the Administration to improve visa policy and processing.
- Launched a *new initiative* to increase refugee students' access to U.S. higher education.
- Collaborated with other higher education organizations on sign-on letters, resources, and events.
- Highlighted the intersections of *immigration status and racial equity* for immigrant students in the *Higher Ed Immigration Portal*, and continued to *advocate for better policies* for Black, Asian, Brown and other immigrants who are disproportionately affected by our broken immigration system.

We know that reforming our nation's immigration laws will not be easily achieved, but we are optimistic that working in partnership with others to marshal the facts, arguments and personal stories about how our students and alumni are strengthening our country is making a difference. Looking ahead, we see possible if narrow pathways for federal reform, including for lawful status for Dreamers and other undocumented individuals, for policies to recruit and retain international students, and for an increase in refugee admissions.

We will be working to capitalize on these opportunities. We also are documenting how higher education access and equity for immigrant students varies by state, and are bringing attention to the best practices and policies for supporting such students.

Our work would not be possible without the support and engagement of our members and the generosity of our funders and partners.

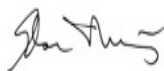
With your continued support, the Presidents' Alliance will work relentlessly to inform stakeholders about immigration priorities, organize members and coalitional partners around the issues that matter, and mobilize resources to advocate with and alongside our undocumented, international, refugee, and other immigrant students.

Thank you for being a part of our Alliance!



Louis Caldera

Co-Chair, Steering Committee
Senior Advisor, Presidents' Alliance



Elsa Núñez

Co-Chair, Steering Committee
Eastern Connecticut State University



Nancy Cantor

Co-Chair, Steering Committee
Chancellor, Rutgers University - Newark



Miriam Feldlbum

Executive Director
Presidents' Alliance

STEERING COMMITTEE

TONY ALLEN,

President, Delaware State University

NOELLE COCKETT,

President, Utah State University

MICHAEL M. CROW,

President, Arizona State University

JOSÉ LUIS CRUZ,

President, Northern Arizona University

JOHN J. DEGIOIA,

President, Georgetown University

RAJ ECHAMBADI,

President, Illinois Institute
of Technology

TAYLOR EIGHMY,

President, University of Texas
at San Antonio

MARK H. ERICKSON,

President, Northampton
Community College

JANE K. FERNANDES,

President, Antioch College

GREGORY A. HAILE,

President, Broward College

DENECEE G. HUFTALIN,

President, Salt Lake
Community College

ROBERT J. JONES,

Chancellor, University of Illinois
at Urbana-Champaign

PHILOMENA MANTELLA,

President, Grand Valley State University

JOYCE MCCONNELL,

President, Colorado State University

EDUARDO J. PADRÓN,

President Emeritus, Miami Dade College

HAVIDÁN RODRÍGUEZ,

President, University at Albany, SUNY

BRIAN SANDOVAL,

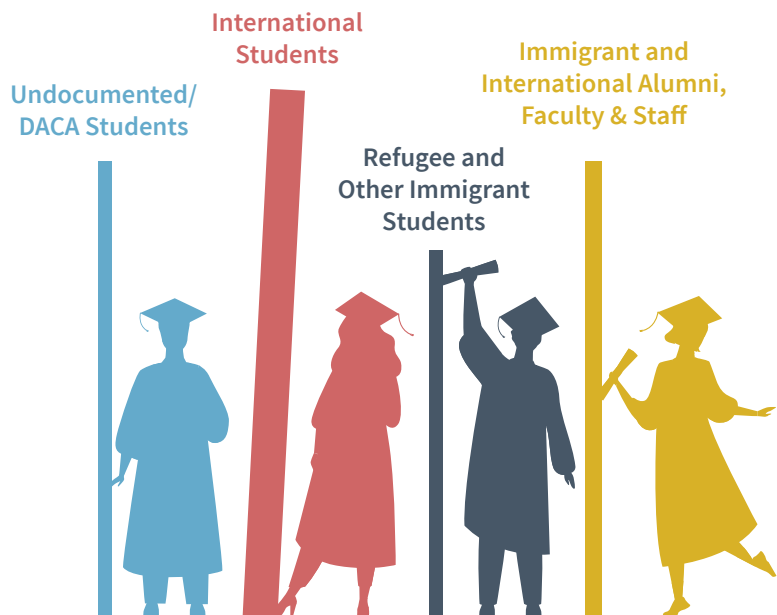
President, University of Nevada, Reno

KIM WILCOX,

Chancellor, U.C. Riverside

OUR IMPACT AT A GLANCE

PRIORITY POPULATIONS





INFORM

We provided technical assistance to 60+ campuses, state policy makers, nonprofits, and other organizations and delivered webinars, trainings, FAQs, and toolkits, including [*legal FAQs for campuses*](#) on experiential and funding opportunities for undocumented students and our updated report with New American Economy, [*Undocumented Students in Higher Education*](#). We held specialized trainings for colleges and universities on issues related to undocumented students and their higher education and career access and equity.



6,000+ registrants for our 31 members-only conversations, rapid response briefings and webinars on critical issues – all with specialized resources.



The Higher Ed Immigration Portal had 73,400 page views and 27,400 users across all 50 states and D.C. and about 120 countries in nine months.



979 registrants and 703 institutions and organizations represented in our briefing, [*Will International Students Return in Fall 2021? A Vital Resource at Risk.*](#)



80 media hits for the Presidents' Alliance and 15 [*press releases*](#) on our major issue areas.



Presidents' Alliance Steering Committee member and Antioch President Jane Fernandes at July 2021 Capitol Hill Press Conference calling for the passage of Dream legislation.

ORGANIZE

We collaborated closely with our members and partners, our advisory groups, and directly impacted students and practitioners, along with 30+ higher education organizations, business groups, advocacy organizations, and nonprofits whose interests overlap with ours. We organized dedicated meetings with other higher ed organizations and the incoming administration on higher ed immigration priorities and held a special briefing involving presidents and chancellors and the new administration. Many of the recommendations we made then have already been implemented by the Biden administration.



Organized over 60 organizations and institutions in support of college and university sponsorship of refugee students.



In less than 24 hours, **60 institutions** joined the Presidents' Alliance and signed onto an amicus brief, led by United We Dream, in support of DACA.



Coordinated more than **150 higher education institutions** to support amicus brief in support of Optional Practical Training (OPT) for international students.



Facilitated **monthly meetings** since August to discuss *resources* and share initiatives to support Afghan parolees on campuses.

MOBILIZE

In 2021, we accelerated our advocacy efforts on behalf of Dreamers, international students, other immigrant students, and refugees. We developed comprehensive legislative recommendations for the new Congress and Administration regarding immigrant students in higher education and published legislative and agency recommendations for restoring U.S. competitiveness for international students.

REASONS TO CELEBRATE: INTERNATIONAL STUDENT ADVOCACY SUCCESSES

We achieved positive visa policy and processing changes:

- ✓ Priority visa processing for students in advance of the fall 2021 academic term.
- ✓ Waiving visa interviews where practical.
- ✓ Restoring consular guidance to help students acquire visas without being subjected to speculative determinations about their future intent.

Stopped the threat of pending regulations that would have deterred prospective international students, including:

- ✓ Changes for duration of status proposed by the Trump administration.
- ✓ H-1B wage prioritization requirements that would have made it more difficult for recent international graduates to work in the U.S.
- ✓ Attempts to eliminate optional practical training.



39 Presidents' Alliance letters, comments, and templates/toolkits advocating for DACA, OPT, Dream legislation, and other issues.



16 policy briefs, guides, and FAQs to highlight key policies, improve support, and empower advocates.



Coordinated comments and resources to the Proposed Rule to Fortify DACA and 38 colleges, universities, and systems submitted comments.



Numerous engagements with congressional offices and agency staff.



Legal victories in the H-1B and OPT cases.

SPOTLIGHT: HIGHER ED IMMIGRATION PORTAL



The *Higher Ed Immigration Portal*, launched in March 2021, brings together a coalition of national, state, and local partners to better support immigrant and international students. A dynamic and living resource, the Portal integrates data, policy analysis, and resources about DACA and undocumented, refugee, other immigrant, and international students to:

- Fuel change at the state and campus level
- Support federal immigration reform
- Build a diverse coalition of partners and stakeholders advocating alongside students

The Portal's Theory of Change identifies the key challenges addressed by the initiative, our guiding principles, the process to effect change, key stakeholders, and desired outcomes (see next page for Theory of Change).

The Portal's partners and contributors include leaders and experts in higher education and immigration fields, stakeholders representing campus leaders and impacted students, and national and local organizations.

KEY DATA

The Portal has proven to serve as an useful policy intervention tool, with higher education institutions and policymakers across the country relying on its analysis and resources, including:

- State scans of four key state policies for all 50 states and D.C.
 - Top 5 State Pages by Views:
 - Texas
 - Georgia
 - California
 - Virginia
 - North Carolina
- Data on undocumented, first and second-generation immigrant, international, and refugee students

FEATURES

- Number of Undocumented, International, and Immigrant-origin Students by State
- Analysis of Higher Ed-related Immigration Federal Policies
- Tracker of 50 State Policies on In-State Tuition, State Financial Aid, Professional Licensure, and Driver Licenses for Undocumented Students
- Effective Practices for Colleges & Universities
- Student and Alumni Narratives

THEORY OF CHANGE

THE CHALLENGE



The U.S. faces **lower higher education enrollment** due to slowing birth rates and shrinking college-age cohorts.



Fragmentation of stakeholders working at the intersection of immigration and higher education.



Decline in the global appeal of the U.S. as a destination for educational and professional advancement.



An outdated immigration system presents barriers for immigrants and needs to be updated.



Immigration laws present barriers for immigrants. **Our immigration system needs to be updated.**



THE SOLUTION

The **HIGHER ED IMMIGRATION PORTAL** is addressing gaps in awareness and building coalitions with relevant stakeholders to advance policy reform according to the following **THEORY OF CHANGE**:

GUIDING PRINCIPLES

WE BELIEVE:

1 HIGHER EDUCATION IS A CRITICAL PATHWAY TO BUILDING THE AMERICAN TALENT POOL.



2 IMMIGRATION IS INTERSECTIONAL.

80%
of immigrant-origin students in higher education are racial and ethnic minorities.



3 NATIONAL, STATE, AND LOCAL POLICY ENVIRONMENTS ARE BEST WHEN INCLUSIVE.



Collaborative state, local, and campus policies.
+
Relentless work of students and other advocates.



THE PORTAL

COALITION BUILDING



Convenes partners and contributors that produce relevant resources, showcases their work, and sustains this network.

CASE MAKING THROUGH EVIDENCE



Centralizes data, research, and storytelling on undocumented, international, refugee, and other immigrant students in one location.

COMMUNICATIONS & OUTREACH



Advances communication and engagement strategies to establish the Portal as a trusted source of information.

POLICY CHANGE

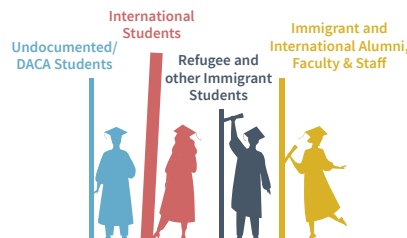


Becomes one of the main policy intervention tools to advance immigration and higher ed reform.

OUTCOMES

1 STATES AND CAMPUSES EXPAND ACCESS TO HIGHER EDUCATION REGARDLESS OF A STUDENT'S IMMIGRATION STATUS.

2 U.S. WELCOMES AND RETAINS INTERNATIONAL STUDENTS.



3 HIGHER EDUCATION IS A RESETTLEMENT PATHWAY FOR REFUGEE STUDENTS.

4 AWARENESS OF THE POSITIVE IMPACT OF IMMIGRANT AND INTERNATIONAL STUDENTS ON THE ECONOMY AND SOCIETY.

KEY STAKEHOLDERS



Students | Colleges & Universities | Higher Ed Associations | Advocates | Multilateral Organizations
U.S. Congress | Governor Offices | State Legislatures | Government Agencies | Public/Media | Philanthropy
More than 16 National and State-level Portal Partners and Contributors

SEE [HERE](#) FOR SOURCES AND MORE BACKGROUND INFORMATION

SPOTLIGHT INITIATIVE: RESPONSE CAMPAIGN

INCREASING REFUGEE STUDENT ACCESS TO U.S. HIGHER EDUCATION

MEETING THE MOMENT

In May 2021, the Presidents' Alliance, with partners, designed a college and university sponsorship program that would significantly increase refugee student entry into the U.S. to pursue higher education. The process brought together current and former refugee students, leaders of refugee resettlement, higher education institutions, philanthropic organizations, and experts in advocacy, international education, and student admissions to develop a robust policy framework and program model for university sponsorship of refugee students.


Forced displacement has reached historic levels. Among the displaced are hundreds of thousands of students dreaming about continuing their education, but while 39% of students are able to access higher education worldwide, only 5% of refugees ever enroll in higher education programs. As the global refugee crisis continues to grow, now is the moment for the U.S. to expand not only refugee admissions, but also to create a complementary education pathway through university sponsorship.



The report *[University Sponsorship of Refugee Students: Initiative on Increasing U.S. Education Pathways for Refugee Students](#)*, has been covered by the *[Chronicle of Higher Education](#)*, *[Inside Higher Ed](#)*, the *[PIE News](#)*, and other outlets.



WHY WE NEED A NEW COLLEGE AND UNIVERSITY PATHWAY FOR REFUGEES

EXISTING PATHWAYS	PROPOSED NEW COLLEGE AND UNIVERSITY PATHWAY
<p>Existing pathways for refugee students are insufficient</p> <div data-bbox="134 604 732 709"> <p>F-1 VISA</p> <p>The main type of student visa in the U.S. and current avenue for refugees to enter the U.S. as students.</p> </div> <p>F-1 VISA BARRIERS:</p> <ul style="list-style-type: none"> • Need to show financial support for length of program • No a durable solution for protection - student must show intention to return to their home country • Limited access to permanent residences and work authorization <div data-bbox="134 905 732 1010"> <p>P1-P3 CATEGORIES</p> <p>Refugees are admitted to the U.S. through existing refugee definitions, vulnerability based resettlement criteria and vetting.</p> </div> <p>Resettled refugees who arrive via these categories may seek to access higher education after they have arrived in the U.S.</p> <ul style="list-style-type: none"> • P-1 (Priority 1): Individuals referred by the UNHCR, a U.S. embassy, or certain NGOs • P-2 (Priority 2): Groups of special humanitarian parole • P-3 (Priority 3): Family reunification cases <p>P1-P3 BARRIERS:</p> <ul style="list-style-type: none"> • Less than 1% of refugees worldwide are resettled • No immediate pathway to education - focused on economic self-sufficiency via employment within 90 days of arrival 	<p>Refugee students would enter the U.S. through a UNIVERSITY SPONSORSHIP PROGRAM</p> <div data-bbox="906 701 1438 1003">  <p>Selection criteria would be based on academic qualifications and potential. To be eligible, students would need to meet the refugee definition.</p> </div> <p>FEWER BARRIERS TO REFUGEE STUDENTS:</p> <ul style="list-style-type: none"> • Durable solution - students come in as refugees with a clear pathway to lawful permanent residence and citizenship • Educational access - students can enroll as full time students and access higher education

The RESPONSE Campaign: College and University Sponsorship of Refugee Students

Learn more at www.higheredimmigrationportal.org/response-campaign

“ If you’re going to be a great institution of learning, you have to have an open and clear policy of tolerance, and of generosity. And to open your doors to refugees is... a moral imperative on the part of universities.”

Leon Botstein,
President of Bard College

WHAT IS UNIVERSITY SPONSORSHIP?

University or college sponsorship of refugee students is an education pathway for refugee students to be admitted as a student into a U.S. higher education institution (HEI) and as a refugee into the U.S. with a path to permanent residence.

THE RESPONSE CAMPAIGN

The “RESPONSE” Campaign refers to “Refugee Sponsorship for Education,” and is an effort to spread awareness and education about university sponsorship of refugee students. Our campaign responds to the challenge and engages colleges and universities to provide an education pathway for refugee students to study, resettle, and obtain legal permanent residence in the U.S. To learn more about how your institution can engage in the RESPONSE Campaign, check out this [toolkit](#)!

U.S. DEPARTMENT OF STATE ANNOUNCED ITS SUPPORT OF UNIVERSITY SPONSORSHIP AT OUR DECEMBER 2021 LAUNCH EVENT

Deputy Assistant Secretary Sarah Cross, State Department’s Bureau of Population, Refugees, and Migration (PRM), stated: “We strongly believe that a university-sponsorship program has great potential to expand refugee access to higher education in the U.S. and to meaningfully leverage the involvement of U.S. college and university communities in the welcome and integration of refugee students.”



“

By not only giving refugees scholarships or finances, but also by making it easier for them to get documents, it will help refugees around the world. I am a strong believer in education because I know education not only opens doors for refugees, but gives them hope. It’s no longer a time where refugees should be secluded from the rest of the world. It is time for all of us to take action.

-Diing Manyang, George Washington University, South Sudan and Kakuma refugee camp.

”



“

The proposed University sponsorship program is important. It will make it easier for refugees to achieve their dreams ... The perspective refugee students bring to colleges, universities, and workplaces is unique. We bring our resilience, our positive outlook in life, and our thirst to learn and generally do better.

-Athiel Mading, Lehigh University, refugee from South Sudan

”

SUPPORTERS AND FUNDERS

We are deeply grateful to the many member institutions that contribute to the Presidents' Alliance through our voluntary annual institutional contribution program. Without your individual leadership and commitment, the Alliance would not exist. We also extend our gratitude to the individual donors who stepped forward to support the Alliance and our work.

We are immensely grateful to the foundations and funders who believe in the importance of the Alliance and in the promise of higher education leaders coming together to support undocumented, immigrant and international students.

Thank you!

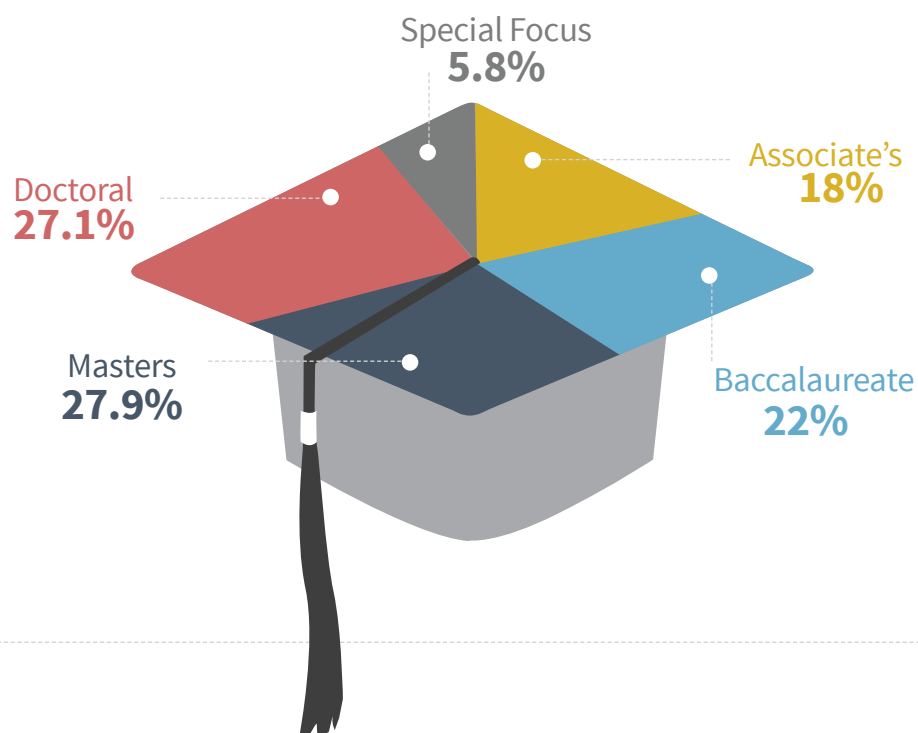


The following foundations and funders have supported us and play a key role in propelling our success:

Andrew W. Mellon Foundation
Anonymous Donor (2)
Beth Midrash Harav Fund
Carnegie Corporation of New York
Chan Zuckerberg Initiative
ECMC Foundation
Evan J. Segal
FWD.us and FWD.us Education Fund
G. Barrie Landry
The Kresge Foundation
Open Society Foundations
Open Society Policy Center
Shapiro Foundation
Walder Foundation

MEMBERSHIP BY THE NUMBERS

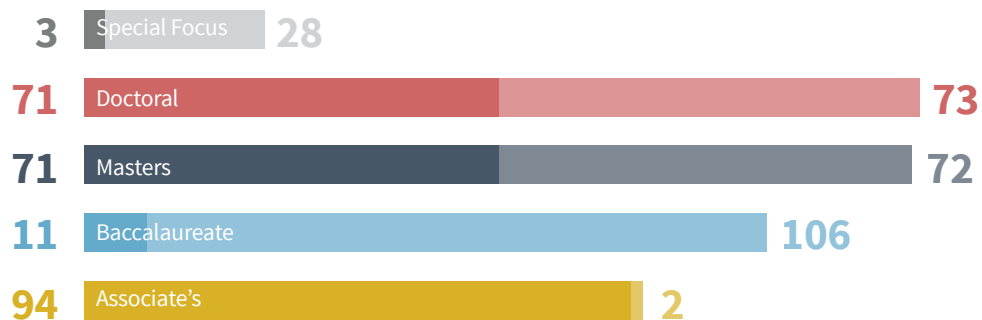
PRESIDENTS' ALLIANCE MEMBER INSTITUTIONS BY CARNEGIE CLASSIFICATION AND CONTROL



533
Institutions



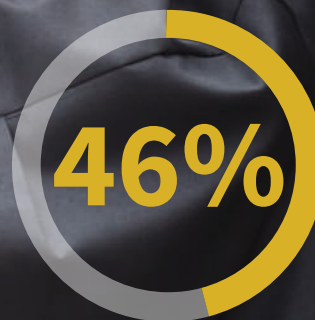
Public Private





24 NEW MEMBERS
JOINED IN 2021

43 STATES, D.C. &
PUERTO RICO



**INCREASE IN
OUR ANNUAL
MEMBERSHIP
CONTRIBUTIONS**



MEMBER INSTITUTIONS



A

Adelphi University
Adler University
Agnes Scott College
American University
Amherst College
Antioch College
Arizona State University
Arizona Western College
Arkansas State University

Arkansas Tech University
Ashland University
Augsburg University
Augustana College
Austin Community College District
Avila University

B

Babson College
Bard College
Barnard College

Barton College
Baruch College, CUNY
Bates College
Beloit College
Bennett College
Bennington College
Bentley University
Berea College
Berkshire Community College
Big Bend Community College
Borough of Manhattan
Community College

Boston Architectural College
Boston Graduate School
of Psychoanalysis
Boston University
Bowdoin College
Brandeis University
Bristol Community College
Bronx Community College, CUNY
Brooklyn College
Brooklyn Law School
Broward College
Brown University
Bryn Mawr College
Bucknell University
Buena Vista University
Butler University

C

Cabrini University
California Institute of Integral Studies
California Institute of Technology
California Institute of the Arts
California Lutheran University
California Polytechnic State
University
California State Polytechnic
University, Pomona
California State University
California State University,
Bakersfield
California State University,
Channel Islands
California State University, Chico
California State University,
Dominguez Hills
California State University, East Bay
California State University, Fresno
California State University, Fullerton
California State University,
Long Beach
California State University,
Los Angeles
California State University,
Monterey Bay
California State University,
Northridge
California State University,
Sacramento
California State University,
San Bernardino

California State University,
San Marcos
California State University, Stanislaus
Calvin University
Cambridge College
Capital Community College
Carleton College
Carnegie Mellon University
Case Western Reserve University
Centenary University
Central Arizona College
Central College, Houston Community
College System
Central Washington University
Chapman University
Charles R. Drew University
of Medicine and Science
Chatham University
Christian Brothers University
CiAM (California Institute
of Advanced Management)
City University of New York
Claremont Graduate University
Claremont McKenna College
Clark University
Cleveland State University
Clinton College
Clovis Community College
(California)
Clovis Community College
(New Mexico)
Coe College
Colby College
Colby-Sawyer College
Colgate University
College of Mount Saint Vincent
College of Our Lady of the Elms
College of Saint Mary
College of Southern Nevada
College of the Atlantic
College of the Holy Cross
Colorado College
Colorado Community College System
Colorado Mountain College
Colorado School of Mines
Colorado State University
Colorado State University Pueblo
Colorado State University System
Columbia College

Columbia Theological Seminary
Columbia University in the City
of New York
Columbus State Community College
Community College of Beaver County
Community College of Rhode Island
Community Colleges of Spokane
Concordia University Texas
Connecticut College
Contra Costa Community
College District
Converse College
Cornell College
Cornell University
Cumberland University

D

Dallas College Eastfield Campus
Dartmouth College
Davidson College
De Anza College
Delaware State University
Denison University
DePaul University
DePauw University
Desert Research Institute
Dewey University
Diablo Valley College
Dickinson College
Dixie State University
Dominican University
Donnelly College
Drexel University
Duke University

E

Earlham College
Eastern Connecticut State University
Eastern Michigan University
Eastern Oregon University
Eastern Washington University
Edgewood College
Edmonds Community College
EDP University of Puerto Rico
El Paso Community College
Elizabethtown College

Elon University
Emerson College
Emory University
Erie County Community College
Essex County College
Everett Community College
Evergreen Valley College

F

Fairfield University
Fairleigh Dickinson University
Felician University
Florida Gulf Coast University
Foothill College
Foothill-De Anza Community College District
Fordham University
Fort Hays State University
Framingham State University
Franklin & Marshall College
Frostburg State University
Furman University

G

George Mason University
Georgetown University
Gettysburg College
Goddard College
Golden West College
Gonzaga University
Goucher College
Governors State University
Grambling State University
Grand Valley State University
Great Basin College
Green River College
Greenfield Community College
Greenville University
Grinnell College
Guilford College
Guttman Community College

H

HACC, Central Pennsylvania's Community College
Hamilton College

Harold Washington College
Hartnell College
Hartwick College
Harvard
Haverford College
Hawai'i Community College
Heidelberg University
Hendrix College
Hillsborough Community College
Hofstra University
Hollins University
Holyoke Community College
Houghton College
Howard Community College
Huston-Tillotson University

I

Illinois Institute of Technology
Imperial Valley College
Ithaca College

J

Jackson College
James Madison University
Johnson & Wales University
Joliet Junior College
Juniata College

K

Kalamazoo College
Kenyon College
Keuka College
Kirkwood Community College
Knox College

L

La Sierra University
Lafayette College
Lake Forest College
Langston University
Lawrence University
Lebanon Valley College
Lees-McRae College
Lehigh University

Lenoir-Rhyne University
Lesley University
Lewis & Clark College
Lewis University
Life Pacific College
Linfield College
Loma Linda University
Los Angeles Mission College
Loyola Marymount University
Loyola University Chicago
Loyola University Maryland
Loyola University New Orleans
Luther College

M

Macalester College
Macauley Honors College of CUNY
Manhattan College
Manhattanville College
Maricopa County Community College District
Marietta College
Marquette University
Mars Hill University
Marshall University
Maryland Institute College of Art
Marymount University
Maryville College
Massachusetts Bay Community College
Massachusetts College of Liberal Arts
Massachusetts Institute of Technology
Menlo College
Mercyhurst University
Metropolitan State University
Metropolitan State University of Denver
Miami Dade College
Michigan State University
Middlebury College
Middlesex Community College
Mills College
Minneapolis Community & Technical College
Minnesota State University Moorhead
Montgomery College
Moravian College

Moreno Valley College, Riverside
Community College

Mount Holyoke College

Mount Wachusett
Community College

Mt. Hood Community College

Mt. San Antonio College

Muhlenberg College

N

Naugatuck Valley Community College

Nebraska Wesleyan University

Nevada State College

Nevada System of Higher Education

New Jersey City University

New Jersey Institute of Technology

New Mexico Highlands University

New Mexico Institute of Mining &
Technology (New Mexico Tech)

New Mexico State University

New York University

Normandale Community College

North Carolina Agricultural &
Technical State University

Northampton Community College

Northeastern Illinois University

Northeastern University

Northern Arizona University

Northern Essex Community College

Northern Illinois University

Northern New Mexico College

Northern Virginia Community College

Northwest University

Northwestern College

Norwalk Community College

Notre Dame de Namur University

O

Oakland University

Oberlin College

Ogden-Weber Technical College

Oglethorpe University

Ohio Wesleyan University

Oregon State University

Our Lady of the Lake University

P

Pace University

Pacific Lutheran University

Palm Beach State College

Palo Alto University

Passaic County Community College

Paul Quinn College

Pima Community College

Pitzer College

Pomona College

Portland Community College

Portland State University

Princeton University

Providence College

Q

Queens College, CUNY

Queens University of Charlotte

Quinsigamond Community College

R

Raritan Valley Community College

Reed College

Relay Graduate School of Education

Rhode Island College

Rhode Island School of Design

Rhodes College

Rice University

Ringling College Of Art And Design

Riverside Community College District

Roberts Wesleyan College

Rochester Institute of Technology

Roger Williams University

Roosevelt University

Rowan University

Roxbury Community College

Rutgers Biomedical and Health
Sciences

Rutgers University, Newark

Rutgers University, Camden

Rutgers University, New Brunswick

S

Sacred Heart Seminary and School
of Theology

Saint Joseph's College of Maine

Saint Joseph's University

Saint Michael's College

Saint Peter's University

Saint Xavier University

Salem State University

Salt Lake Community College

Salus University

Salve Regina University

San Antonio College

San Bernardino Community
College District

San Diego State University

San Francisco State University

San German Campus of
Interamerican University
of Puerto Rico

San Joaquin Delta College

San Jose State University

San Juan Bautista School
of Medicine

Santa Clara University

Sarah Lawrence College

Saybrook University

School of the Art Institute of Chicago

School of Visual Arts

Scripps College

Seattle Central College

Seattle Pacific University

Seattle University

Seton Hall University

Shoreline Community College

Simmons University

Simpson College

Skagit Valley College

Smith College

Soka University of America

Sonoma State University

South Carolina State University

South Central College

South Texas College

Southeastern University

Southern Connecticut
State University

Southern New Hampshire University
 Southern Oregon University
 Southern University and A&M College
 Southwest Minnesota
 State University
 Southwestern University
 Springfield Technical
 Community College
 St. Catherine University
 St. Cloud State University
 St. Edward's University
 St. John's University
 St. Lawrence University
 St. Mary's College of Maryland
 St. Norbert College
 St. Olaf College
 St. Petersburg College
 St. Thomas University
 Stanford University
 State Center Community College
 District
 Stevens Institute of Technology
 Stockton University
 Stony Brook University
 Suffolk University
 SUNY Cortland
 SUNY Geneseo
 SUNY New Paltz
 Swarthmore College

T

TCS Education System
 Teachers College, Columbia
 University
 Texas A&M University, San Antonio
 Texas Lutheran University
 Texas State University
 The Alamo Colleges
 The Catholic University of America
 The Chicago School
 of Professional Psychology
 The College of Saint Rose
 The College of Wooster
 The Cooper Union
 The Evergreen State College
 The George Washington University
 The New School
 The Ohio State University
 The University of New Orleans
 The University of Texas at El Paso
 The University of Texas
 at San Antonio
 Three Rivers Community College
 Towson University
 Toyota Technological Institute
 at Chicago
 Transylvania University
 Trevecca Nazarene University

Trinity College
 Trinity University
 Trinity Washington University
 Truckee Meadows Community
 College
 Tufts University

U

Union Institute & University
 University of Alaska Southeast
 University at Albany
 University of Arkansas
 University of California, Berkeley
 University of California, Davis
 University of California, Irvine
 University of California, Los Angeles
 University of California, Merced
 University of California, Riverside
 University of California, San Diego
 University of California,
 San Francisco
 University of California,
 Santa Barbara
 University of California, Santa Cruz
 University of California System
 University of Central Missouri
 University of Colorado System
 University of Connecticut
 University of Dayton



University of Denver
 University of Hawai'i
 University of Illinois at Chicago
 University of Illinois at Urbana-Champaign
 University of La Verne
 University of Lynchburg
 University of Mary Washington
 University of Maryland Baltimore
 University of Maryland, Baltimore County
 University of Massachusetts Amherst
 University of Massachusetts Boston
 University of Massachusetts Dartmouth
 University of Massachusetts Lowell
 University of Massachusetts Medical School
 University of Memphis
 University of Miami
 University of Michigan
 University of Michigan-Dearborn
 University of Michigan-Flint
 University of Minnesota
 University of Nevada, Las Vegas
 University of Nevada, Reno
 University of New England
 University of New Hampshire
 University of North Carolina at Greensboro
 University of North Texas
 University of North Texas at Dallas
 University of Oklahoma
 University of Oregon
 University of Pennsylvania

University of Puget Sound
 University of Redlands
 University of Rochester
 University of Saint Mary
 University of San Diego
 University of San Francisco
 University of South Florida
 St Petersburg
 University of Southern California
 University of the District of Columbia
 University of the Incarnate Word
 University of the People
 University of the Sciences
 University of the Southwest
 University of the West
 University of Utah
 University of Washington
 University System of Maryland
 Utah State University

V

Vanguard University
 Vassar College
 Vermont College of Fine Arts
 Virginia Tech
 Virginia Wesleyan University

W

Wabash College
 Wake Forest University
 Walla Walla Community College
 Warner University

Warren Wilson College
 Washington & Jefferson College
 Washington and Lee University
 Washington University in St. Louis
 Wayne State University
 Weber State University
 Wellesley College
 Wells College
 Wenatchee Valley College
 Wesleyan University
 West Virginia State University
 West Virginia University
 Westchester Community College
 Western Connecticut State University
 Western Nevada College
 Western Oregon University
 Western Washington University
 Westfield State University
 Westminster College
 Wheaton College
 Whitman College
 Whittier College
 Whitworth University
 Wilbur Wright College
 William Jessup University
 William Paterson University
 William Rainey Harper College
 Williams College
 Winona State University

Y

Yakima Valley College
 Yale University



AFFILIATE PARTNERS

In 2021, the Presidents' Alliance launched an Affiliate Partners program for organizations that are aligned with our mission and interested in the benefits of a more formal connection with the Presidents' Alliance.

College Track

EnglishUSA

IES Abroad

Institute for Holocaust and Genocide Studies

Jesuit Refugee Services, USA

Refugee & Migrant Education Network

TheDream.US

World Education Services (WES)

ADVISORY GROUPS

FEDERAL POLICY ADVISORY TABLE

The Federal Policy Advisory Table, composed primarily of federal relations officers of member institutions, provides early input, feedback, guidance, and advice on the Alliance's federal policy priorities and advocacy. Membership in the Federal Policy Advisory Table does not indicate endorsement of the Presidents' Alliance advocacy, positions, or statements.

LEGAL ADVISORY COUNCIL

The Council provides input, insights and recommendations on all types of legal issues and litigation actions that the Presidents' Alliance should pursue and support as part of its mission to support undocumented, other immigrant, refugee, and international students and scholars in higher education. Membership in the Legal Advisory Council does not indicate endorsement of the Presidents' Alliance advocacy, positions, or statements.

STUDENT STRATEGY TABLE

The Student Strategy Table, a group of student leaders from undocumented, refugee, other immigrant, and international student communities, helps the Presidents' Alliance by ensuring our work and objectives are informed by and responsive to the priorities, needs, experiences, and expertise of those who are directly impacted by immigration policies. Membership in the Student Strategy Table does not indicate endorsement of the Presidents' Alliance advocacy, positions, or statements.

STAFF

PRESIDENTS' ALLIANCE STAFF

Oscar Bahati, Project Associate, Initiative on U.S. Education Pathways for Refugee Students

Luz Bertadillo Rodriguez, Project Manager, State and Campus Policy Initiatives

Rajika Bhandari, Senior Advisor

Miriam Feldblum, Executive Director

Emily Fine, Director of Membership, Strategic Partnerships, and Operations

Cezanne Hayden-Dyer, Project Associate

Christian Penichet-Paul, Director, Higher Ed Immigration Portal

Jose Magaña-Salgado, Director of Policy and Communications

Laura Wagner, Project Manager, Initiative on U.S. Education Pathways for Refugee Students

Jill Welch, Senior Policy Advisor

PRESIDENTS' ALLIANCE STUDENT FELLOWS

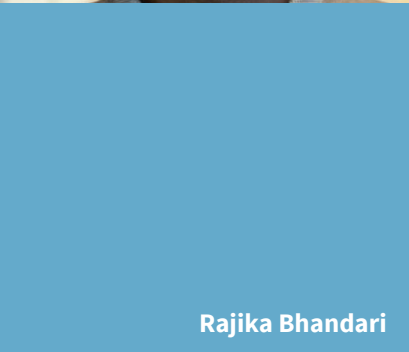
Maria Lopez Zamudio
Tatiana Estrada



Oscar Bahati



Luz Bertadillo Rodriguez



Rajika Bhandari



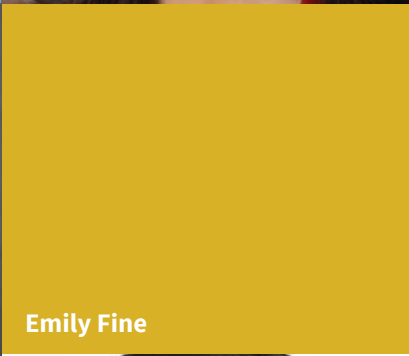
Emily Fine



Miriam Feldblum



Christian Penichet-Paul



Cezanne Hayden-Dyer



Jose Magaña-Salgado



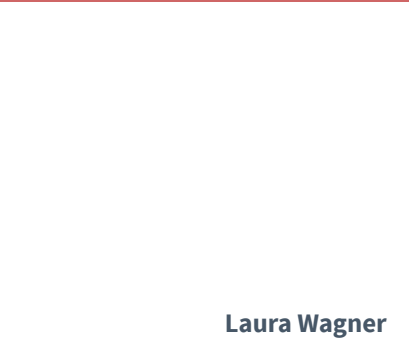
Laura Wagner



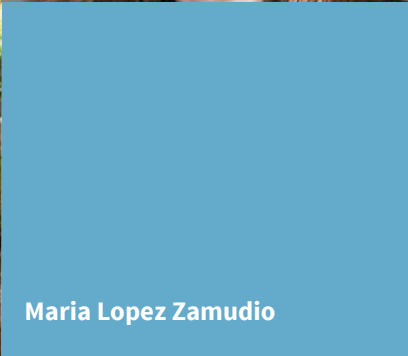
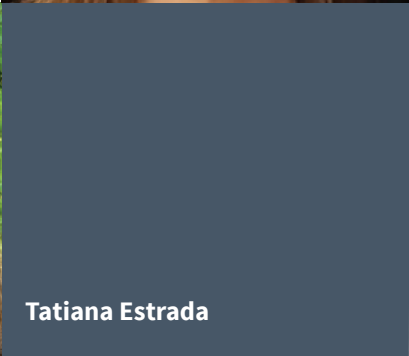
Jill Welch



Tatiana Estrada



Maria Lopez Zamudio





JOIN OUR MOVEMENT

What began as a founding group of 29 members in December 2017 has grown to more than 500 presidents and chancellors across 43 states, Washington D.C., and Puerto Rico. And we're still growing! If you would like more information about how to join as either a [member institution](#) or an [affiliate partner](#), please contact info@presidentsalliance.org.

The Presidents' Alliance is a nonpartisan, nonprofit educational and advocacy organization that brings college and university presidents and chancellors together around the immigration issues that impact our students, campuses, communities, and nation. We work to advance just immigration policies and practices at the federal, state and institutional level that are consistent with our heritage as a 'nation of immigrants' and the academic values of equity and openness.

“

There's power in numbers in creating and establishing change through policy. I'm grateful for the Presidents' Alliance because it works with higher education institutions to bring about this change for immigrant students.”

| Ewaoluwa Ogundana,
‘21, Trinity Washington University



“ The U.S. advances when we remain true to our heritage as a land of opportunity for those who dream of a better life for themselves and their children.”

Louis Caldera,
Co-Chair, Steering Committee
Senior Advisor, Presidents' Alliance

PRESIDENTS' ALLIANCE | ON HIGHER EDUCATION
AND IMMIGRATION

**HIGHER ED
IMMIGRATION
PORTAL**

CONTACT

EMILY FINE | Director of Membership, Strategic Partnerships, and Operations | info@presidentsalliance.org

www.presidentsalliance.org