

PRESIDENTS' | ON HIGHER EDUCATION
ALLIANCE AND IMMIGRATION



ANNUAL IMPACT REPORT

2020



“ The Presidents’ Alliance has always been
a value-add. It is a partnership we treasure.”

| José Cárdenas,
General Counsel, Arizona State University

740 15th Street, NW Suite 900, Washington, D.C. 20005
info@presidentsalliance.org
<http://presidentsalliance.org/>

Design by trueindigo.co

Cover photo from istock by SDI Productions
Photo p-3 from Freepik by Drobotdean
Photo p-6 from Pixabay by Zach Dulli
Photo p-11 from Unsplash by Sam Balye
Photo p-12 from Freepik by Cookie Studio
Photo p-14 from Unsplash by The Climate Reality Project
Photo p-23 by istock by fstop123
Back Cover photo from Pixabay by Lea Hope Bonzer

Icons and illustrations by Freepik and Flaticon

PRESIDENTS' ALLIANCE | ON HIGHER EDUCATION AND IMMIGRATION

TABLE OF CONTENTS

MESSAGE FROM PRESIDENTS' ALLIANCE
CO-CHAIRS AND EXECUTIVE DIRECTOR 4

Steering Committee Members 5

OUR IMPACT AT A GLANCE 6

Priority Populations 6

Advocate 7

Activate 8

Educate 9

Collaborate 10

HIGHER ED IMMIGRATION PORTAL
2021 SPOTLIGHT 12

An Agent for Change 13

Portal Objectives 13

OUR SUPPORTERS AND FUNDERS 14

OUR ALLIANCE 15

Members by the Numbers 15

Members' Institutions 16

ADVISORY GROUPS AND STAFF 22

Federal Policy Advisory Table 22

Legal Advisory Council 22

Student Strategy Table 22

Presidents' Alliance Staff 22

JOIN OUR MOVEMENT 23



MESSAGE FROM PRESIDENTS' ALLIANCE CO-CHAIRS AND EXECUTIVE DIRECTOR:

Dear Colleagues and Friends,

Greetings! Over this past year, our Alliance - now over 500 members strong - stood together and made a significant difference on the immigration issues that impact our immigrant and international students, our campuses, and our communities.

Our Alliance has established itself as a critical resource that brings the voice and influence of college and university presidents to shaping immigration policy. As an Alliance, we contributed research and advocacy to important legal and policy victories in the last year of the Trump administration, forcefully defending the rights of immigrant and international students. Highlights include:

- Protecting the Deferred Action for Childhood Arrivals (DACA) program in the courts;
- Affirming the value of Optional Practical Training (OPT) for our international students;
- Successfully challenging the ICE SEVP guidance that attempted to bar all international students from remaining in the U.S. if their academic programs were online due to the pandemic;
- Preventing the implementation of the proposed rule to end duration of status (D/S) for international students and visitors; and
- Bringing legal actions to stop ill-considered revisions to the unlawful presence policy (ULP) and policies impacting H-1B visas.

Your support and engagement as members and campuses contributed immensely to these victories and our work, while the generosity of our funders and partners enabled us to amplify our impact.

With a new administration in place our work is far from over. The Biden administration offers prospects for positive changes to immigration policies through executive action and legislative proposals. But we are in a pivotal moment as we work to make sure these policies reflect our priorities and that we are helping to communicate their importance to our nation so that these proposals become a reality.

As you review our Annual Impact Report take a moment to consider how far we've already come. With your support, the Presidents' Alliance is primed to continue to be a strong and influential voice for advancing the immigration priorities for higher education institutions and our students, ensuring greater access and equity for immigrant and refugee students and making the case for a national recruitment and retention strategy for international students, alumni, and scholars.

Thank you for being a part of our Alliance!



Louis Caldera

Co-Chair, Steering Committee
Senior Advisor, Presidents' Alliance



Nancy Cantor

Co-Chair, Steering Committee
Chancellor, Rutgers University - Newark



Alan W. Cramb

Co-Chair, Steering Committee
President, Illinois Institute of Technology



Miriam Feldlbum

Executive Director
Presidents' Alliance

STEERING COMMITTEE MEMBERS

Tony Allen,

President, Delaware State University

Joseph I. Castro,

Chancellor, The California State University

Noelle Cockett,

President, Utah State University

José Luis Cruz,

Executive Vice Chancellor, University Provost,
City University of New York

Mark Erickson,

President, Northampton Community College

John J. DeGioia,

President, Georgetown University

Jane Fernandes,

Former President, Guilford College

Denece Huftalin,

President, Salt Lake Community College

Elsa M. Núñez,

President, Eastern CT State University

Eduardo Padrón,

President Emeritus, Miami Dade College

Joseph E. Steinmetz,

Chancellor, University of Arkansas

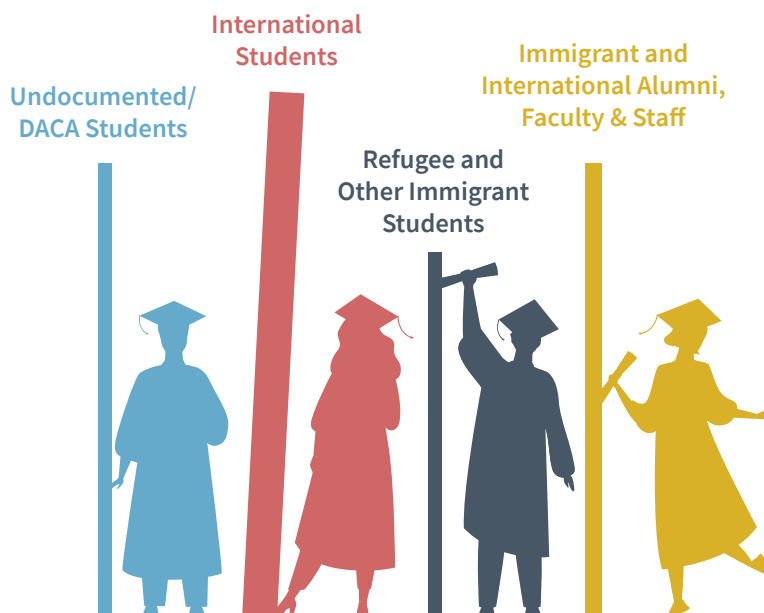
Kim Wilcox,

Chancellor, U.C. Riverside

OUR IMPACT AT A GLANCE



PRIORITY POPULATIONS



ADVOCATE

The Presidents' Alliance has established itself as a leader in higher education and immigration advocacy. We have provided technical assistance to congressional offices and delivered targeted advocacy resources for our members. In April, over 25 Colorado colleges and universities sent a [letter](#) to their state's congressional delegation with a request to extend work permits and protection for DACA recipients. We developed [Legislative Recommendations Regarding Immigrant Students, Higher Education Access, Federal Financial Aid, and Professional and Occupational Licensure](#), containing a comprehensive set of higher education and immigration-related recommendations and specific legislative language on a novel non-discrimination provision for immigrants in higher education.



23 Presidents' Alliance letters, comments, and templates/toolkits advocating for DACA, OPT, Dream legislation, COVID relief, and other support.



50+ institutions used our templates to send letters to congressional delegations and comments.



12 policy briefs, guides, and FAQs to highlight key policies, improve support, and empower advocates



Numerous engagements with congressional offices, agency staff, and the Biden-Harris transition team

ACTIVATE

We engaged in significant administrative and regulatory advocacy, with much of it designed to support litigation and legal challenges, including subsequent challenges where the Presidents' Alliance acted as a plaintiff and coordinated amicus briefs. Among the highlights, 180 member institutions from 28 states joined our amicus brief in under 36 hours to support online flexibility for international students during the pandemic. We activated members to oppose the proposed rule to end duration of status, coordinated with partners at NAFSA to develop a talking points template for institutions to use, and held rapid response briefings and prepared for the possibility of litigation. We activated members to submit comments regarding the U.S. Department of Education's exclusion of undocumented students from emergency financial grants. Simultaneously, we submitted a substantial comment with detailed legal analysis that mirrored much of the legal reasoning that would be used to eventually enjoin the rule.



160 colleges and universities joined an amicus brief to support DACA in the Supreme Court DACA win in June 2020



180 colleges and universities joined an amicus brief to support international students in a legal challenge to ICE SEVP rules in July 2020



5 Court victories (DACA, ICE SEVP rules, unlawful presence policy, OPT, and H-1B visa rules)



32,000+ comments opposing the proposed rule to end duration of status included comments submitted by many Alliance member institutions, using a Presidents' Alliance-NAFSA talking points template

EDUCATE

Whether dissecting the *implications* of the Supreme Court's DACA decision or addressing the *impact* of COVID-19 on international populations, we provided our members with up-to-date resources and information about how to support their students during 2020's overlapping crises. A response to one of our briefings sums up our efforts well: "It is great to know we are all working together, and even though there are no definite or certain answers at this point, we are all seeking to provide the best information available." We continued to elevate the importance of immigrants and international students in higher education. With the New American Economy, we issued the first ever report that estimated the number of *Undocumented Students in Higher Education*. Another report, *Immigrant Origin Students in Higher Education*, resulted in a NY Times *exclusive*. Over the course of 2020 we had more than 70 *media hits* for the Presidents' Alliance and issued 22 *press releases* on our major issue areas.



11, 179 registrants for our 15 webinars, members-only conversations, and COVID-19 and rapid response briefings on critical issues – all with specialized resources



550 institutions/organizations represented in our briefing on the COVID-19 impact on undocumented students



861 institutions/organizations represented in our briefing on the COVID-19 impact on international students and alumni



2 first-of-its-kind data reports on undocumented and immigrant origin students in higher education by state



3 strategy sessions on DACA, undocumented students and international populations in higher education, bringing together higher education leaders, associations, and institutions with immigrant advocates, experts, and analysts




Established the Student Strategy Table, which includes undocumented, refugee, and international students from across the country



20+ higher education associations, immigration groups, and research organizations are among the many partners with which the Presidents' Alliance has worked, co-sponsored events, produced advocacy tools, and issued reports.

COLLABORATE

As the only national organization singularly focused on the intersection of higher education and immigration, we are uniquely positioned to collaborate with other higher education organizations, think tanks, and advocacy and support non-profits whose interest areas overlap with ours. The Presidents' Alliance partnered with TheDream.US to release, on a rapid basis, a survey report, *Discouraging and Denying Renewals: An Assessment on the Impact of the July 2020 DHS Memorandum on DACA*, which collected key data from over a thousand DACA recipients regarding the impact of the previous administration's July 2020 memo. These data were subsequently utilized and cited in litigation in California challenging that very memorandum. In December 2020, we hosted a strategy session with our partners, out of which we developed and *delivered* over a dozen recommendations to improve DACA without changing the terms of the 2012 memorandum to the incoming administration.



“There’s power in numbers in creating and establishing change through policy. I’m grateful for the Presidents’ Alliance because it works with higher education institutions to bring about this change for immigrant students.”

Ewaoluwa Ogundana,
'21, Trinity Washington University

HIGHER ED IMMIGRATION PORTAL 2021 SPOTLIGHT



AN AGENT FOR CHANGE

The Higher Ed Immigration Portal (the Portal) is a coalition of organizations working together to expand the impact and reach of their work. It provides higher education leaders, policymakers, students, and other stakeholders with the information and tools they need to inform immigration policies that expand access to higher education, degree completion, and post-graduate career success.

The Portal's partners & contributors include leaders and experts in higher education and immigration fields, stakeholders representing campus leaders and impacted students, and national and local organizations. The Portal is an inclusive approach to making advocacy and best practice initiatives more cohesive and effective. It allows partners to quickly ramp up their work and share resources in response to changing policies within states and at the federal level, and provides strategic messaging to create a positive narrative about these students. We welcome new partners and contributors to join the coalition.

FEATURES

- Immigrant and International Student Data
 - Analysis of Higher Ed-related Immigration Federal Policies
 - Tracker of 50 State Policies on In-State Tuition, State Financial Aid, Professional Licensure, and Driver Licenses
 - Interactive U.S. Map and Data Tools
 - Leading Research
 - Effective Practices for Colleges & Universities
 - Student Narratives
 - Strategic Messaging
-



PORTAL OBJECTIVES

Coming spring 2021: a new digital platform that integrates data, policies, narratives, and resources to support undocumented, refugee, immigrant and international students. **The Higher Ed Immigration Portal** leverages partnerships to maximize impact and achieve its vision of:

Supporting
policymaking
and advocacy
at the federal
level

Building
a larger
movement
advocating
for change

Fueling change
at the state
and institution
levels

Serving as the
go-to resource
for higher
education and
immigration
issues



OUR SUPPORTERS AND FUNDERS

We are deeply grateful to the many member institutions that contribute to the Presidents' Alliance through our voluntary annual institutional contribution program. Without your individual leadership and commitment, the Alliance would not exist. We also extend our gratitude to the individual donors who stepped forward to support the Alliance and our work.

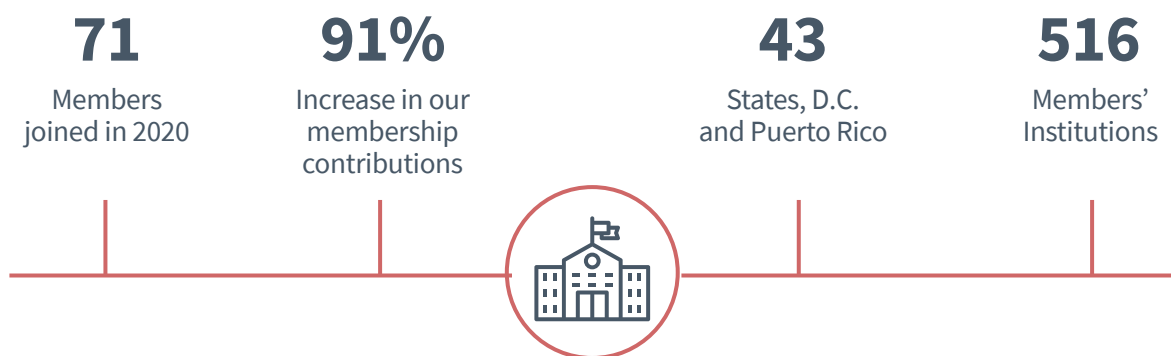
We are immensely grateful to the foundations and funders who believed in the importance of the Alliance and in the promise of higher education leaders coming together to support undocumented, immigrant and international students.

The following foundations and funders have supported us and play a key role in propelling our success:

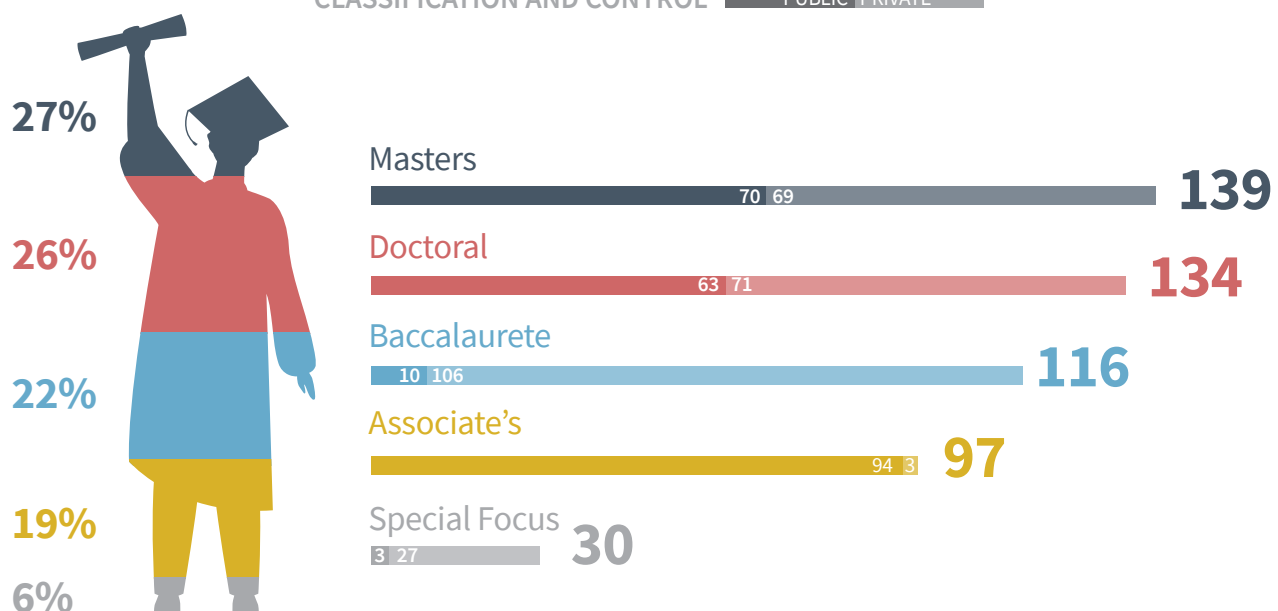
Anonymous Funder
Chan Zuckerberg Initiative
FWD.us and FWD.us Educational Fund
Mellon Foundation
Open Society Foundations
Open Society Policy Center

OUR ALLIANCE

MEMBERSHIP BY THE NUMBERS



PRESIDENTS' ALLIANCE MEMBERS' INSTITUTIONS BY CARNEGIE CLASSIFICATION AND CONTROL



* Associate's include institutions that grant associate's degrees only and those that grant associate's and baccalaureate degrees

** Special Focus includes all institutions classified as special focus four-year institutions

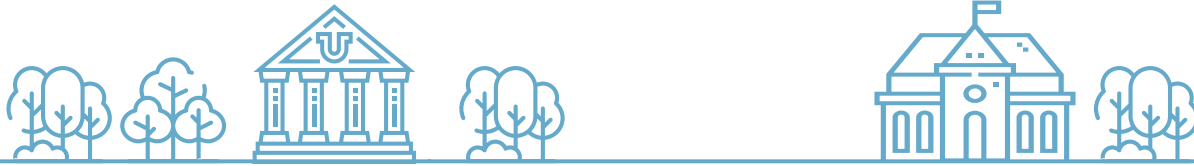
MEMBERS' INSTITUTIONS



Adelphi University
Adler University
Agnes Scott College
American University
Amherst College
Arizona State University
Arizona Western College
Arkansas State University
Arkansas Tech University
Ashland University
Augsburg University
Augustana College
Austin Community
College District
Avila University
Bard College
Barnard College
Barton College
Baruch College, CUNY
Bates College
Becker College
Bellevue College
Beloit College
Bennett College
Bennington College
Bentley University
Berea College
Berkshire Community College
Big Bend Community College
Borough of Manhattan
Community College
Boston Architectural College
Boston Graduate School
of Psychoanalysis
Boston University

Bowdoin College
Brandeis University
Bristol Community College
Bronx Community College,
CUNY
Brooklyn College
Brooklyn Law School
Broward College
Brown University
Bryn Mawr College
Bucknell University
Buena Vista University
Butler University
Cabrini University
California Institute
of Integral Studies
California Institute
of Technology
California Institute of the Arts
California Lutheran University
California Polytechnic State
University
California State Polytechnic
University, Pomona
California State University,
Bakersfield
California State University,
Channel Islands
California State University,
Chico
California State University,
Dominguez Hills
California State University,
East Bay
California State University,
Fresno
California State University,
Fullerton

California State University,
Long Beach
California State University,
Los Angeles
California State University,
Monterey Bay
California State University,
Northridge
California State University,
Sacramento
California State University,
San Bernardino
California State University,
San Marcos
California State University,
Stanislaus
Calvin University
Cambridge College
Capital Community College
Carleton College
Carnegie Mellon University
Centenary University
Central Arizona College
Central College, Houston
Community College System
Central Washington University
Chapman University
Charles R. Drew University
of Medicine and Science
Chatham University
Christian Brothers University
CiAM (California Institute
of Advanced Management)
City University of New York
Claremont Graduate
University
Claremont McKenna College



Clark University
Cleveland State University
Clinton College
Clovis Community College
Coe College
Colby College
Colby-Sawyer College
Colgate University
College of Mount Saint Vincent
College of Our Lady
of the Elms
College of Saint Mary
College of Southern Nevada
College of the Atlantic
College of the Holy Cross
Colorado College
Colorado Community
College System
Colorado Mountain College
Colorado School of Mines
Colorado State University
Pueblo
Colorado State University
System
Columbia College
Columbia Theological
Seminary
Columbia University
in the City of New York
Columbus State Community
College
Community College
of Beaver County
Community College
of Rhode Island
Community Colleges
of Spokane

Concordia University Texas
Connecticut College
Contra Costa Community
College District
Converse College
Cornell College
Cornell University
Cumberland University
Dallas College Eastfield
Campus
Dartmouth College
Davidson College
De Anza College
Delaware State University
Denison University
DePaul University
DePauw University
Desert Research Institute
Dewey University
Diablo Valley College
Dickinson College
Dixie State University
Dominican University
Donnelly College
Drexel University
Duke University
Earlham College
Eastern Connecticut State
University
Eastern Michigan University
Eastern Oregon University
Eastern Washington University
Edgewood College
Edmonds Community College
EDP University of Puerto Rico

El Paso Community College
Elizabethtown College
Elon University
Emerson College
Emory University
Essex County College
Everett Community College
Fairfield University
Fairleigh Dickinson University
Felician University
Florida Gulf Coast University
Foothill College
Foothill-De Anza Community
College District
Fordham University
Fort Hays State University
Framingham State University
Franklin & Marshall College
Frostburg State University
Furman University
George Mason University
Georgetown University
Gettysburg College
Goddard College
Golden West College
Gonzaga University
Goucher College
Governors State University
Grambling State University
Great Basin College
Green River College
Greenfield Community College
Greenville University
Grinnell College



Guilford College
Guttman Community College
HACC, Central Pennsylvania's
Community College
Hamilton College
Hartnell College
Hartwick College
Harvard University
Haverford College
Hawai'i Community College
Heidelberg University
Hendrix College
Hillsborough Community
College
Hofstra University
Hollins University
Holyoke Community College
Houghton College
Howard Community College
Huston-Tillotson University
Illinois Institute of Technology
Imperial Valley College
Ithaca College
Jackson College
James Madison University
Johnson & Wales University
Joliet Junior College
Judson College
Juniata College
Kalamazoo College
Kenyon College
Keuka College
Kirkwood Community College
Knox College
La Sierra University

Lafayette College
Lake Forest College
Langston University
Lawrence University
Lebanon Valley College
Lees-McRae College
Lehigh University
Lenoir-Rhyne University
Lesley University
Lewis & Clark College
Lewis University
Life Pacific College
Linfield College
Loma Linda University
Los Angeles Mission College
Loyola Marymount University
Loyola University Chicago
Loyola University Maryland
Loyola University New Orleans
Luther College
Macalester College
Macaulay Honors
College of CUNY
Manhattan College
Manhattanville College
Maricopa Community
College District
Marietta College
Marquette University
Mars Hill University
Marshall University
Maryland Institute
College of Art
Marymount University
Maryville College

Massachusetts Bay
Community College
Massachusetts College
of Liberal Arts
Massachusetts Institute
of Technology
Menlo College
Mercyhurst University
Metropolitan State University
Metropolitan State University
of Denver
Miami Dade College
Middlebury College
Middlesex Community College
Mills College
Minneapolis Community
& Technical College
Minnesota State University
Moorhead
Montgomery College
Moravian College
Moreno Valley College,
Riverside Community College
Mount Holyoke College
Mount Wachusett
Community College
Mt. Hood Community College
Mt. San Antonio College
Muhlenberg College
Naugatuck Valley
Community College
Nebraska Wesleyan University
Nevada State College
Nevada System of Higher
Education
New Jersey City University
New Mexico Highlands
University



New Mexico Institute of Mining
& Technology
New Mexico State University
New York University
Normandale Community
College
North Carolina Agricultural
& Technical State University
Northampton Community
College
Northeastern Illinois
University
Northern Arizona University
Northern Essex Community
College
Northern Illinois University
Northern New Mexico College
Northern Virginia
Community College
Northwest University
Northwestern College
Norwalk Community College
Notre Dame de Namur
University
Oakland University
Oberlin College
Oglethorpe University
Ohio Wesleyan University
Oregon State University
Our Lady of the Lake
University
Pace University
Pacific Lutheran University
Palm Beach State College
Palo Alto University
Passaic County Community
College

Paul Quinn College
Pima Community College
Pitzer College
Pomona College
Pontifical Catholic University
of Puerto Rico
Portland Community College
Portland State University
Princeton University
Providence College
Queens College, CUNY
Queens University of Charlotte
Quinsigamond Community
College
Raritan Valley Community
College
Reed College
Relay Graduate School
of Education
Rhode Island College
Rhode Island School of Design
Rhodes College
Rice University
Ringling College of Art
and Design
Riverside Community
College District
Roberts Wesleyan College
Rochester Institute of
Technology
Roger Williams University
Roosevelt University
Rowan University
Roxbury Community College
Rutgers Biomedical
and Health Sciences

Rutgers University,
New Brunswick
Rutgers University, Newark
Rutgers University, Camden
Sacred Heart Seminary
and School of Theology
Saint Joseph's College
of Maine
Saint Joseph's University
Saint Michael's College
Saint Peter's University
Saint Xavier University
Salem State University
Salt Lake Community College
Salus University
San Antonio College
San Bernardino Community
College District
San Diego State University
San Francisco State University
San German Campus of
Interamerican University
of Puerto Rico
San Joaquin Delta College
San Jose State University
San Juan Bautista School
of Medicine
Santa Clara University
Sarah Lawrence College
Saybrook University
School of the Art Institute
of Chicago
School of Visual Arts
Scripps College
Seattle Central College
Seattle Pacific University



Seattle University
Seton Hall University
Shoreline Community College
Simmons University
Simpson College
Skagit Valley College
Smith College
Soka University of America
Sonoma State University
South Carolina State University
South Central College
South Texas College
Southeastern University
Southern Connecticut State University
Southern New Hampshire University
Southern Oregon University
Southern University and A&M College
Southern Utah University
Southwest Minnesota State University
Southwestern University
Springfield Technical Community College
St. Catherine University
St. Cloud State University
St. Edward's University
St. John's University
St. Lawrence University
St. Mary's College of Maryland
St. Norbert College
St. Olaf College
St. Petersburg College

St. Thomas University
Stanford University
State Center Community College District
Stevens Institute of Technology
Stockton University
Stony Brook University
Suffolk University
SUNY Cortland
SUNY Geneseo
SUNY New Paltz
Swarthmore College
TCS Education System
Teachers College, Columbia University
Texas A&M University, San Antonio
Texas Lutheran University
Texas State University
The Alamo Colleges
The California State University
The Catholic University of America
The Chicago School of Professional Psychology
The College of Saint Rose
The College of Wooster
The Cooper Union
The Evergreen State College
The George Washington University
The New School
The Ohio State University
The University of New Orleans
The University of Texas at El Paso

The University of Texas at San Antonio
Three Rivers Community College
Towson University
Toyota Technological Institute at Chicago
Transylvania University
Trevecca Nazarene University
Trinity College
Trinity University
Trinity Washington University
Truckee Meadows Community College
Tufts University
Union Institute & University
University of Arkansas
University of California Berkeley
University of California Davis
University of California Irvine
University of California Los Angeles
University of California Merced
University of California Riverside
University of California San Diego
University of California San Francisco
University of California Santa Barbara
University of California Santa Cruz
University of California System
University of Central Missouri
University of Connecticut



University of Dayton
University of Denver
University of Hawai'i
University of Illinois at Chicago
University of Illinois at
Urbana-Champaign
University of La Verne
University of Mary Washington
University of Maryland
Baltimore
University of Maryland,
Baltimore County
University of Massachusetts
Amherst
University of Massachusetts
Boston
University of Massachusetts
Dartmouth
University of Massachusetts
Lowell
University of Massachusetts
Medical School
University of Memphis
University of Miami
University of Michigan
University of Michigan-
Dearborn
University of Michigan-Flint
University of Minnesota
University of Nevada,
Las Vegas
University of New England
University of New Hampshire
University of North Carolina
at Greensboro
University of North Texas
University of North Texas
at Dallas

University of Northwestern,
St. Paul
University of Oklahoma
University of Oregon
University of Pennsylvania
University of Puget Sound
University of Redlands
University of Rochester
University of Saint Mary
University of San Diego
University of San Francisco
University of South Florida
St Petersburg
University of the District
of Columbia
University of the
Incarnate Word
University of the People
University of the Sciences
University of the Southwest
University of the West
University of Utah
University System
of Maryland
Utah State University
Vanguard University
Vassar College
Vermont College of Fine Arts
Virginia Wesleyan University
Wabash College
Wake Forest University
Walla Walla Community
College
Warner University
Warren Wilson College
Washington & Jefferson
College

Washington and
Lee University
Washington University
in St. Louis
Wayne State University
Weber State University
Wellesley College
Wells College
Wenatchee Valley College
Wesleyan University
West Hills Community
College District
West Virginia State University
Western Connecticut State
University
Western Nevada College
Western Oregon University
Western Washington
University
Westfield State University
Westminster College
Wheaton College
(Massachusetts)
Whitman College
Whittier College
Whitworth University
Wilbur Wright College
William Jessup University
William Paterson University
William Rainey Harper College
Williams College
Winona State University
Yakima Valley College
Yale University

ADVISORY GROUPS AND STAFF

FEDERAL POLICY ADVISORY TABLE

The Federal Policy Advisory Table, composed primarily of federal relations officers of members' institutions, provides early input, feedback, guidance, and advice on the President Alliance's federal policy priorities and advocacy. Membership in the Federal Policy Advisory Table does not indicate endorsement of the Presidents' Alliance advocacy, positions, or statements.

LEGAL ADVISORY COUNCIL

The Council provides input, insights and recommendations on all types of legal issues and litigation actions that the Presidents' Alliance should pursue and support as part of its mission to support undocumented, other immigrant and international students and scholars in higher education. Membership in the Legal Advisory Council does not indicate endorsement of the Presidents' Alliance advocacy, positions, or statements.

STUDENT STRATEGY TABLE

The Student Strategy Table, a group of student leaders from undocumented, refugee, other immigrant, and international student communities, helps the Presidents' Alliance by ensuring our work and objectives are informed by and responsive to the priorities, needs, experiences, and expertise of those who are directly impacted by immigration policies. Membership in the Student Strategy Table does not indicate endorsement of the Presidents' Alliance advocacy, positions, or statements.

PRESIDENTS' ALLIANCE STAFF

Miriam Feldblum, Executive Director

Emily Fine, Membership and Operations Manager

Jose Magaña-Salgado, Director of Policy and Communications

Christian Penichet-Paul, Director of the Higher Education and Immigration Portal

Ronnie Rios, Immigration Policy Communications Fellow (part time)



JOIN OUR MOVEMENT

What began as a founding group of 29 members in December 2017 has grown to more than 500 presidents and chancellors across 43 states, Washington D.C., and Puerto Rico. And we're still growing! In 2021, we are launching an affiliate partners [program](#) for organizations who are aligned with our mission. If you would like more information about how to join as either a [member institution](#) or an [affiliate partner](#), please contact info@presidentsalliance.org.

The Presidents' Alliance is a nonpartisan, nonprofit educational and advocacy organization that brings college and university presidents and chancellors together around the immigration issues that impact our students, campuses, communities, and nation. We work to advance just immigration policies and practices at the federal, state and institutional level that are consistent with our heritage as a 'nation of immigrants' and the academic values of equity and openness.



“ The Alliance is making such a difference for our students and is particularly important to small colleges that do not have the legal staff to independently think through these issues.”

Steven C. Bahls,
President, Augustana College

PRESIDENTS' | ON HIGHER EDUCATION
ALLIANCE | AND IMMIGRATION

www.presidentsalliance.org

CONTACT

EMILY FINE | Membership and Operations Manager | info@presidentsalliance.org